



DIVISION OF FAMILY RESOURCES

Elkhart County Monthly Management Report December 2013

State of Indiana
Michael R. Pence
Governor

**Family and Social Services
Administration**
Debra F. Minott
Secretary

**Division of Family
Resources**
Lance Rhodes
Director

For questions regarding data on this report contact:
office.Communications@fssa.IN.gov



State of Indiana
Published January 2014



DIVISION OF FAMILY RESOURCES

Monthly Management Report

Reporting Month: December 2013

Location: Elkhart County

TEMPORARY ASSISTANCE FOR NEEDY FAMILIES (TANF)

Child-Only and One-Parent Families	December 2013	November 2013	December 2012	Annual Change
Number of families receiving TANF Grants	325	343	422	-22.99%
Total number of grant recipients	795	833	1,101	-27.79%
Number of adult grant recipients	153	162	243	-37.04%
Number of child grant recipients	642	671	858	-25.17%
Total payments	\$57,910	\$61,685	\$78,524	-26.25%
Average payment per case	\$178.18	\$179.84	\$186.08	-4.24%
Average payment per recipient	\$72.84	\$74.05	\$71.32	2.13%
Number of cases with benefits reduced to zero	15	14	12	25.00%
Number of recipients with benefits reduced to zero	33	40	26	26.92%
Number of adult recipients with benefit reduced to zero	8	9	5	60.00%
Number of child recipients with benefit reduced to zero	25	31	21	19.05%

Two-Parent Families	December 2013	November 2013	December 2012	Annual Change
Number of families receiving TANF Grants	43	43	59	-27.12%
Total number of grant recipients	215	218	277	-22.38%
Number of adult grant recipients	79	80	107	-26.17%
Number of child grant recipients	136	138	170	-20.00%
Total payments	\$6,820	\$6,646	\$11,500	-40.70%
Average payment per case	\$158.60	\$154.56	\$194.92	-18.63%
Average payment per recipient	\$31.72	\$30.49	\$41.52	-23.59%
Number of cases with benefits reduced to zero	1	1	2	-50.00%
Number of recipients with benefits reduced to zero	4	4	9	-55.56%
Number of adult recipients with benefit reduced to zero	2	2	4	-50.00%
Number of child recipients with benefit reduced to zero	2	2	5	-60.00%



DIVISION OF FAMILY RESOURCES

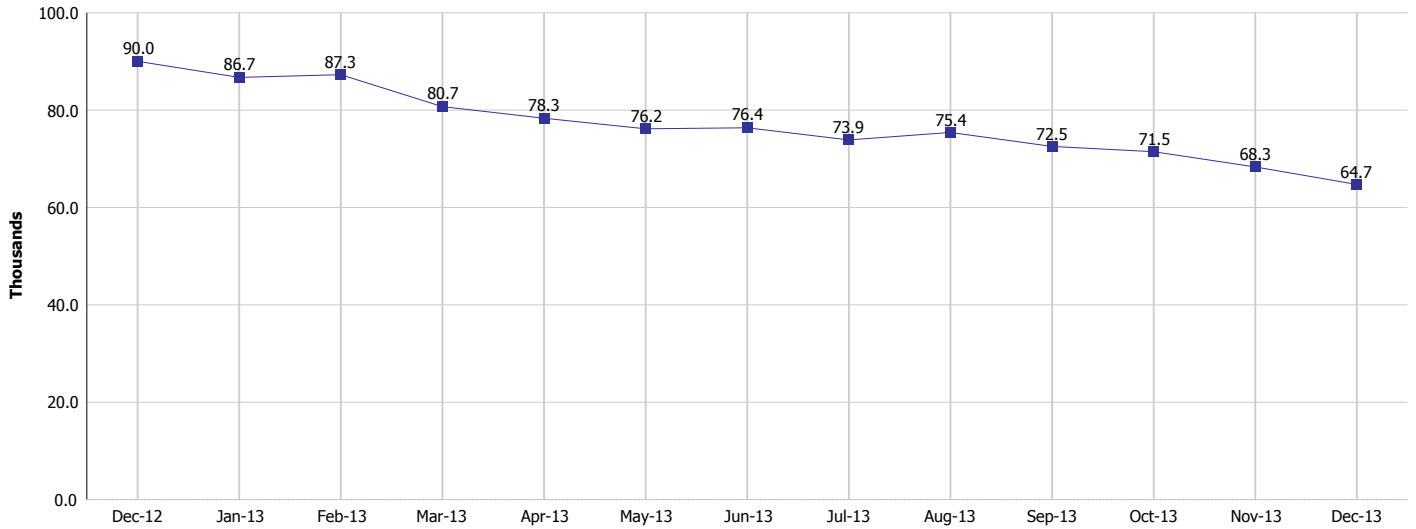
Monthly Management Report

Reporting Month: December 2013

Location: Elkhart County

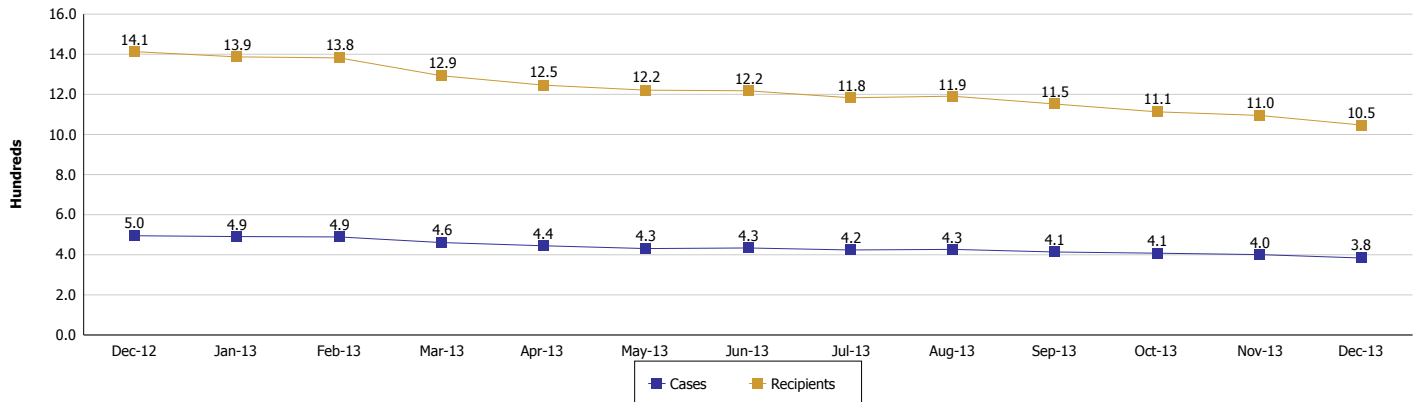
TEMPORARY ASSISTANCE FOR NEEDY FAMILIES (TANF)

TANF Regular And TANF UP Cash Assistance



TANF Cases and Recipients

(TANF Regular and TANF UP)





DIVISION OF FAMILY RESOURCES

Monthly Management Report

Reporting Month: December 2013

Location: Elkhart County

SUPPLEMENTAL NUTRITION ASSISTANCE PROGRAM (SNAP)

	December 2013	November 2013	December 2012	Annual Change
Total issuance	\$3,041,963	\$3,057,158	\$3,567,850	-14.74%
Number of households receiving SNAP benefits	10,982	11,031	11,593	-5.27%
Number of recipients	25,749	25,838	27,585	-6.66%
Average issuance per household	\$277	\$277.14	\$307.76	-9.99%
Average issuance per recipient	\$118.14	\$118.32	\$129.34	-8.66%



DIVISION OF FAMILY RESOURCES

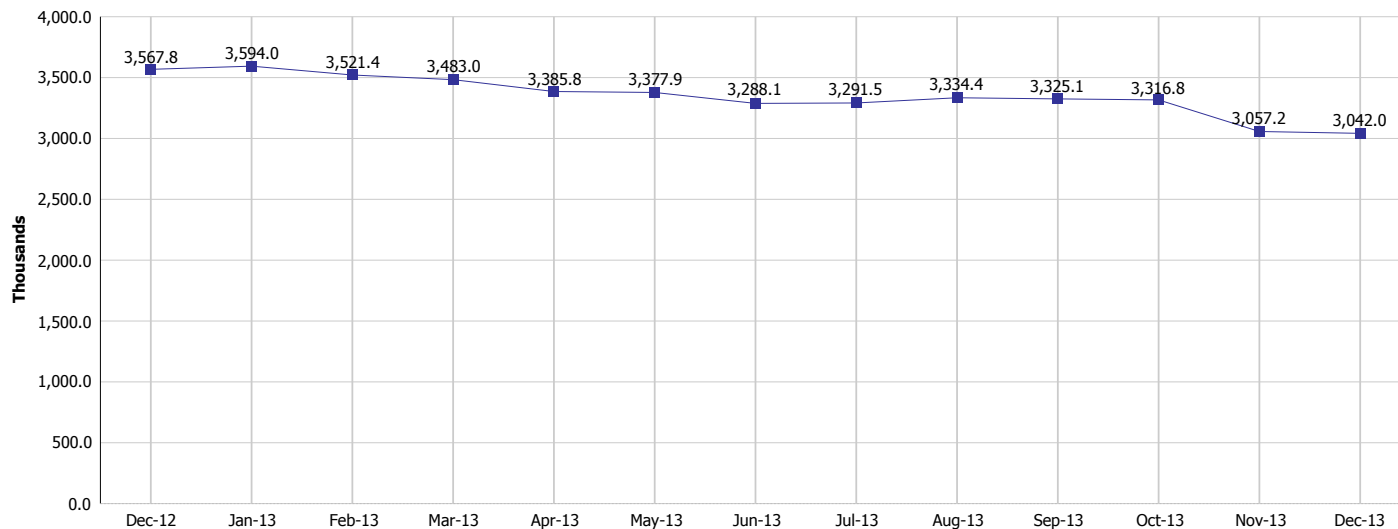
Monthly Management Report

Reporting Month: December 2013

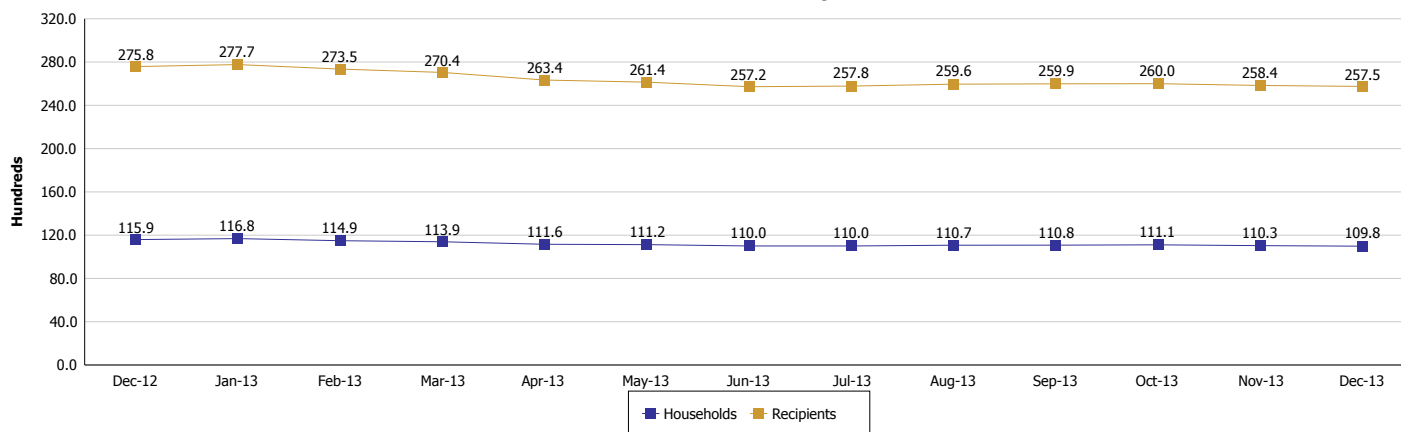
Location: Elkhart County

SUPPLEMENTAL NUTRITION ASSISTANCE PROGRAM (SNAP)

SNAP Issuance



SNAP Households and Recipients





DIVISION OF FAMILY RESOURCES

Monthly Management Report

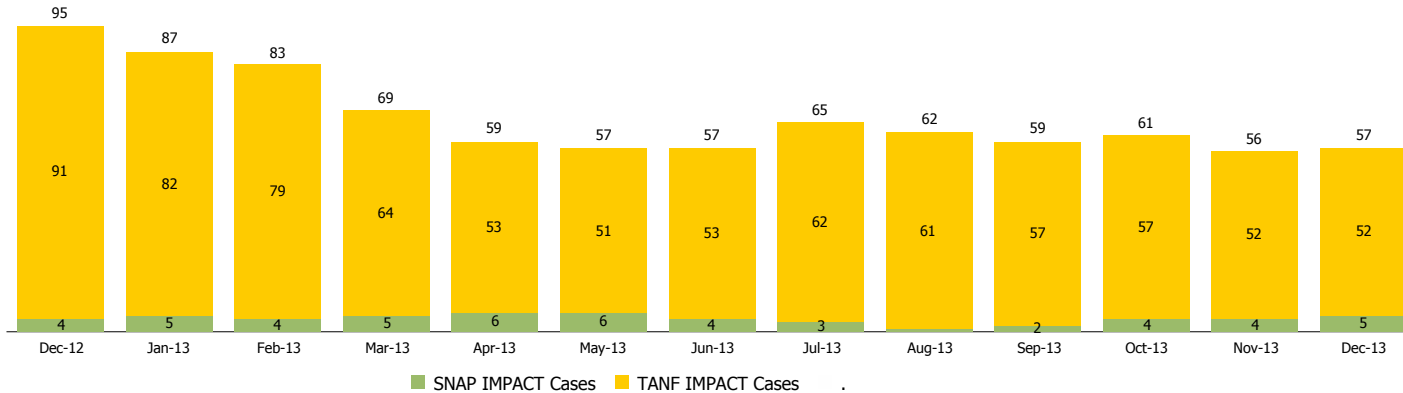
Reporting Month: December 2013

Location: Elkhart County

INDIANA MANPOWER PLACEMENT AND COMPREHENSIVE TRAINING (IMPACT)

	December 2013	November 2013	December 2012	Annual Change
Number of IMPACT cases	57	56	95	-40.00%
Number of TANF IMPACT Cases	52	52	91	-42.86%
Number of SNAP IMPACT Cases	5	4	4	25.00%
Total number of adults employed	5	8	8	-37.50%
Number of TANF IMPACT adults employed	3	7	8	-62.50%
Number of SNAP IMPACT adults employed	2	1	0	/0
Total number of adults ineligible due to employment	64	72	71	-9.86%
Number of TANF adults ineligible due to employment	1	1	3	-66.67%
Number of SNAP adults ineligible due to employment	63	71	68	-7.35%

IMPACT Caseloads
(SNAP, TANF, Total Caseload)





DIVISION OF FAMILY RESOURCES

Monthly Management Report

Reporting Month: December 2013

Location: Elkhart County

CHILD CARE

	December 2012	Annual Change
Total Subsidized Child Care Payments	\$299,237	
Total Number of CCDF Children	807	
Total Number of licensed Child Care Homes	38	
Licensed Capacity of Child Care Homes	450	
Total Number of Licensed CC Centers	10	
Licensed Capacity of CC Centers	999	
Total Number of Registered Ministries (Capacity not Regulated)	17	